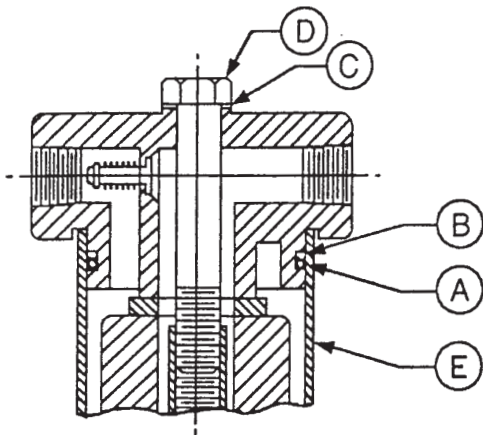


FILTER ELEMENT REPLACEMENT INSTRUCTIONS



1. To replace element, back off capscrew "D" approx. 1/2". Then tap capscrew "D" to break seal between tank and head. Remove the center capscrew "D" and the tank assembly "E".
2. Remove O-Ring "A", back-up ring "B" and washer "C". Clean all components.
3. Install new back-up ring, O-Ring and washer.
4. Apply lubricant on O-Ring and back-up ring to aid in tank installation.
5. Install element in the tank and then install tank to filter head.
6. Re-install capscrew with washer and torque to 80-90 ft. lbs. Operate unit and check for leaks.